

The Real, SaaS DataOps platform

All your banking data,
analytics and AI on one platform!



Focus on your business, not on managing your data

The amount of stored data is growing day by day, and with complex applications processing data from many different sources and across clouds-it is increasingly challenging and time consuming to find data that matches the needs of the organization and an even bigger challenge to do so, at the speed of the business.

ConnectIQ is an API-first, cloud-native, federated data platform, unifying MLOps and DataOps, with advanced data integration, data governance, and data democratization capabilities, to create and manage your enterprise data pipelines end-to-end.

- Connect and intergrate banking data and other data sources
- Accelerate data delivery,
- Facilitate secure data sharing
- Enable rich data insights faster with data integrity at the core.

Making your Temenos Data accessible and understandable

It supports all Temenos Transact, Infinity and Wealth releases on premise and in the cloud (compatible with Temenos Banking Cloud 2.1 and older versions), extracts and self-updates metadata and production data to create a normalised database. ConnectIQ, can be deployed on-premise or in the major cloud platforms -Microsoft Azure, GCP, AWS.

- CustomerSync for high performance customer data copying
- ObjectSync for fit-for-purpose, reliable test data when you need it
- Data Privacy to protect your sensitive data

With ConnectIQ, the bank creates the 'Digital Twin' of their system, by automatically discovering, scanning and mapping all the data and the metadata dictionaries. All Temenos data (Customer, Account, Arrangement Architecture, Securities, Forex, Money Market, REPO, etc.) can be extracted, aggregated and normalised to populate data lakes, data warehouses, analytics, reporting and business intelligence, collection systems etc., as well as for testing and development.

ConnectIQ supports ETL, ELT and non-ETL data flows with simple, no-code, 'drag and drop' techniques, as well as data aggregation from multiple sources, and can process:

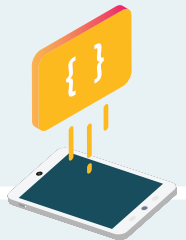
- Local reference fields, multi-value and sub-value fields
- Temenos AA products
- Multi-Company, Multi-Branch and Non-Stop Processing
- Scalable and incremental data uploads
- Configurable and complex selection conditions and visual metadata editing.
- GL and COB performance KPIs and analytic reports
- Cards, Credit score, collection packages

CustomerSync

CustomerSync lets you select a subset of client data to produce a fully functional client with a reduced data footprint. With it you can:

- Reduce the data by time period, company code or based on specific data requirements.
- Ensure that all dependencies are intact when slicing the data.
- Cleanse the data and ensure Data Integrity
- Easily copy custom or locally developed tables.

It uses up to 80% less disk space. It is fast and you can save up to 90% in time because less data is transferred.



ObjectSync

It allows business users to select data at Temenos business object level and copy it on demand to a non-production system. You can test and train using valid production data and refresh the data needed.

- Includes templates to be able to reuse settings easily.
- Copies through the Temenos APIs or Database to ensure data integrity.
- Transfer data consistently and intelligently without involving technical resources.



Data Privacy

Ensures compliance and data security for your critical Temenos applications through ML-augmented data algorithms:

- Identifies and Masks sensitive data, faster and easier, and delivers it to non-production Temenos environments, on-premises or cloud.
- Complies with all global data protection standards, such as (GDPR), etc.
- Supports Synchronization with external sources
- Data can be virtualized to accelerate testing cycles and maintain data quality, while avoiding the need for frequent refreshes.





Unlock your financial data by creating a synthetic data layer

ConnectIQ can synthesize data from scratch or by looking at your existing datasets and uses AI to build data models and automatically create synthetic data, while maintaining the characteristics, relationships and statistical patterns of the original data for maximum data quality and coverage.

- Access exactly the data you need and, on the scale, you need, to develop and test new applications.
- Overcome privacy and security challenges eliminating the risk of data breaches.
- Shorten the testing and development cycles by several days every sprint, improving the overall release cycle and saving significant costs.

Delivering Data as a Service anywhere and on demand!

ConnectIQ provides secure and direct data access to every data consumer in your organisation through a self-service portal. Data can be shared and reused across different data models and pipelines.

It creates a clean 'Golden Copy' of the Temenos environment, which can be used as the baseline for any new QA or Development environment to be created, and populated with fit-for-purpose, quality data.

- Deliver full DevTest environments in minutes, so project teams can work instead of sit and wait.
- Reduce the costs of intermediate storage as well as process delays
- Create any number of virtual zero-byte copies on demand!



Gain faster insights. Predict Outcomes. Recommend Next Actions.

Engage customers with seamless experiences across channels with personalized actions and offers.

With the ability to bring together data from your Temenos and other enterprise applications — live or historical, the platform leverages AI and machine learning models to create the Golden customer record and recommend the 'next best product' for existing or new customers.

- Customer 360 view
- 'Next Best Plan': for example, recommend the best plan for a client-Pay in 6 months because you are low income and your debt to income is low etc.
- 'Next Best Product' : determine what the 'next best product' is for existing or new customers
- Buy-Now-Pay-Later based on customer historical data

Benefits

- No-code, fully automated data preparation and access in just minutes!
- Reduce Storage, Infrastructure Costs and Admin Overheads for managing data and environments
- Orchestrate data integrity and data governance across data pipelines
- Discover Insights and make AI-assisted, Data-driven Decisions
- Metadata management, data lineage, data cataloguing.
- Secure, Multi-tenant Data Sharing, Self-service access
- Provision data faster by 100x. Reduce data footprint by 50x.
- Reduce data footprint by 50x.
- Accelerate application delivery and reduce the data-related defects by having the right test data in the right environment at the right time!
- Enable teams to operate at maximum speed reducing data waiting times and delivering in-sprint automation.